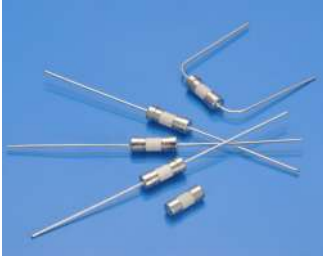
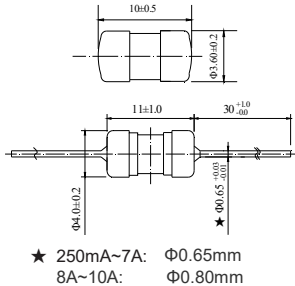


333 Subminiature Cartridge Fuse



Dimensions (unit in mm)



Main Characteristics

Subminiature Cartridge fuse; Fast-Acting (F)

Standard

IEC-60127-3/III

Materials

Tube: Ceramic Tube
End Caps: Nickel plated brass
Axial Leads: Nickel plated caps
Tin plated copper wires

Operating Temperature

-55°C to +125°C

Storage Conditions

+10°C to +60°C
Relative humidity: ≤75% yearly average
Without dew, maximum 30 days at 95%

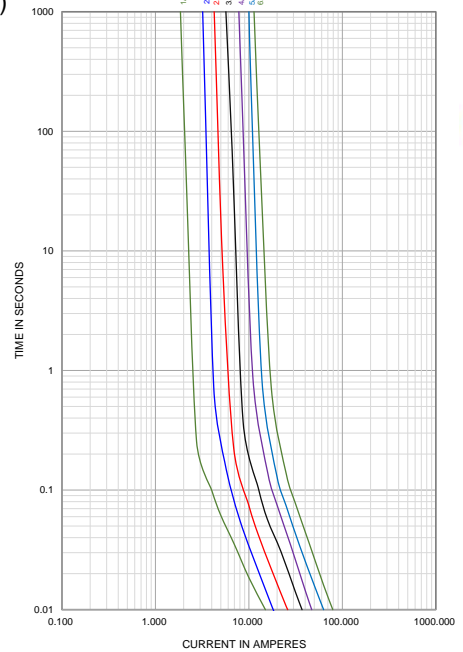
Vibration Resistance

24 cycles at 15 min. each (60068-6)
10-60Hz at 0.75mm amplitude
60-2000Hz at 10g acceleration

Soldering Parameters

260°C. ≤5 sec (Wave Soldering)
350°C. ≤3 sec (Hand Soldering)
Soldering Peak:
260°C. 10 sec. (IEC 60068-20)

Average Current Curve(I-T Curve)



Time vs Current Characteristics: IEC-60127-3/III

| Rated Current | 150% | 210% | 275% | 400% | 1000% |
|---------------|------|--------|---------|-----------|-------|
| 250mA~10A | >1h | <30min | 10ms~3s | 3ms~300ms | ≤20ms |



Electrical Characteristics at 25°C

| Amp Code | Rated Current | Rated Voltage | Max Voltage Drop(mV) | Max. Power Dissipation (mW) | Typical Cold Resistance (mΩ) | Nominal Melting I ² t(A ² sec) | Breaking Capacity | Approvals | | |
|----------|---------------|---------------|----------------------|-----------------------------|------------------------------|--|---|--------------------------------|-----|---|
| | | | | | | | | cULus | TUV | |
| 0315 | 315mA | 250V AC | 400 | 331 | 201.0 | 0.152 | 50A @ 250V AC 50A @ 125V AC 35A or 10In/250V AC | ● | ○ | |
| 0750 | 750mA | | 310 | 630 | 133.9 | 0.941 | | ● | ○ | |
| 1100 | 1.00A | | 280 | 375 | 63.8 | 2.25 | | ● | ○ | |
| 1150 | 1.50A | | 250 | 1050 | 36.7 | 2.77 | | ● | ○ | |
| 1200 | 2.00A | | 240 | 1260 | 25.2 | 3.20 | | ● | ● | |
| 1250 | 2.50A | | 200 | 1313 | 21.0 | 6.75 | | ● | ○ | |
| 1315 | 3.15A | | 180 | 1488 | 14.6 | 13.69 | | ● | ○ | |
| 1400 | 4.00A | | 160 | 1680 | 10.9 | 20.09 | | ● | ○ | |
| 1500 | 5.00A | | 150 | 1969 | 8.33 | 39.69 | | ● | ○ | |
| 1630 | 6.30A | | 150 | 1969 | 7.00 | 62.41 | | ● | ● | |
| 1800 | 8.00A | | 150 | 1969 | 5.80 | 92.16 | | ● | ○ | |
| 2100 | 10.00A | | 150 | 1969 | 4.73 | 156.3 | | 50A @ 250V AC 50A @ 125V AC | ● | ○ |

Note: (1) Permissible continuous operating current is ≤100% at ambient temperature of 23°C (73.4°F)
(2) The cULus certification by 125V and 250V; the others certification by 250V.

Ordering Information

| Series | Amp Code | Supplementary Code | Qty |
|--------|----------|--------------------|-----|
| 333 | | | |